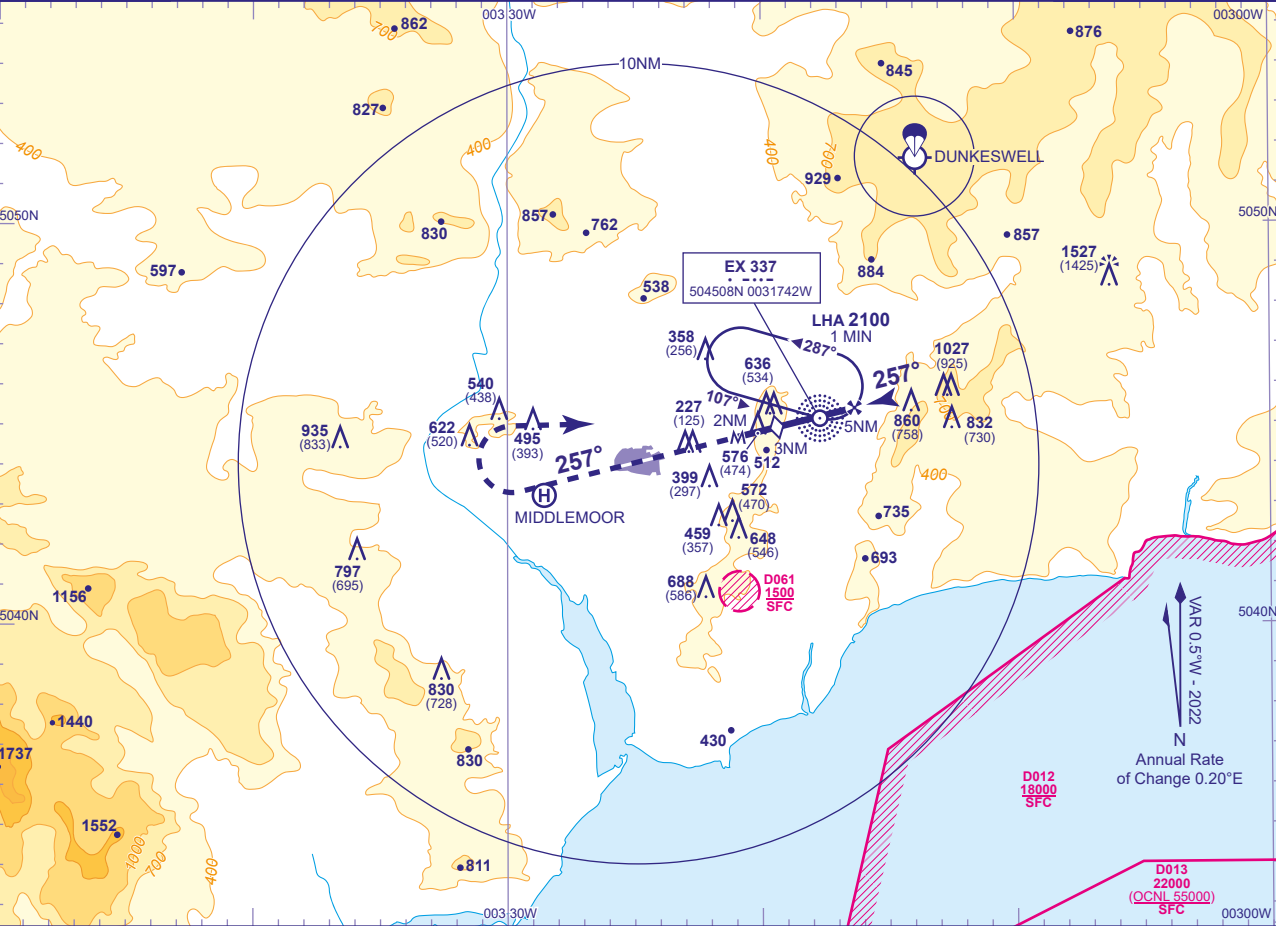


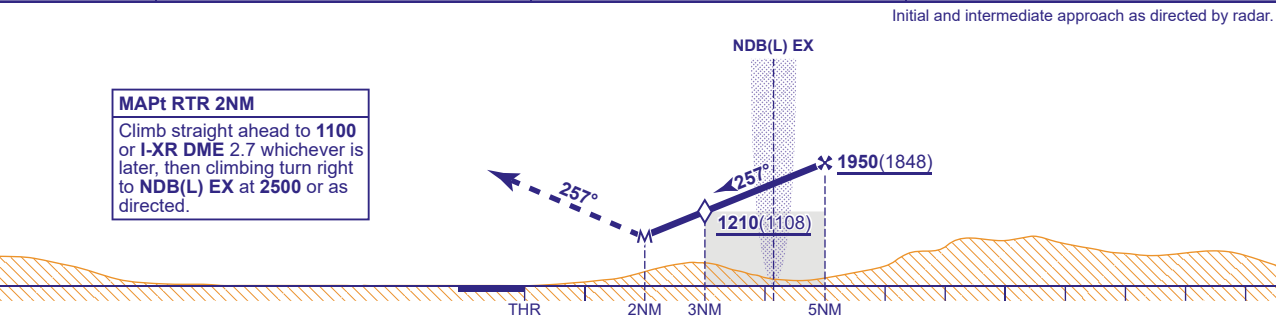
INSTRUMENT APPROACH CHART - ICAO

EXETER  
SRA RTR 2NM  
RWY 26  
(ACFT CAT A,B,C,D)

	APP	128.980	EXETER APPROACH	AD ELEVATION	102	TRANSITION ALTITUDE 3000
	TWR	119.805	EXETER TOWER	THR ELEVATION	102	
	RAD	128.980, 123.580	EXETER RADAR	OBSTACLE ELEVATION	1527 AMSL (1425) (ABOVE THR)	
	ATIS	119.330	EXETER INFORMATION	BEARINGS ARE MAGNETIC		



RADAR ADVISORY HEIGHTS Gradient 6.1%, 370FT/NM			
NM	5.0	4.0	3.0 (SDF)
ALT(HGT)	1950(1848)	1580(1478)	1210(1108)



Aircraft Category		A	B	C	D	Rate of descent	G/S KT	160	140	120	100	80
OCA (OCH)	Procedure	890(788)	890(788)	890(788)	890(788)		FT/MIN	990	860	740	620	490
VM(C)OCA (OCH AAL)	Total Area	890(788)	900(798)	1090(988)	1090(988)							

NOTE ATC will normally require aircraft to hold not lower than 3500.